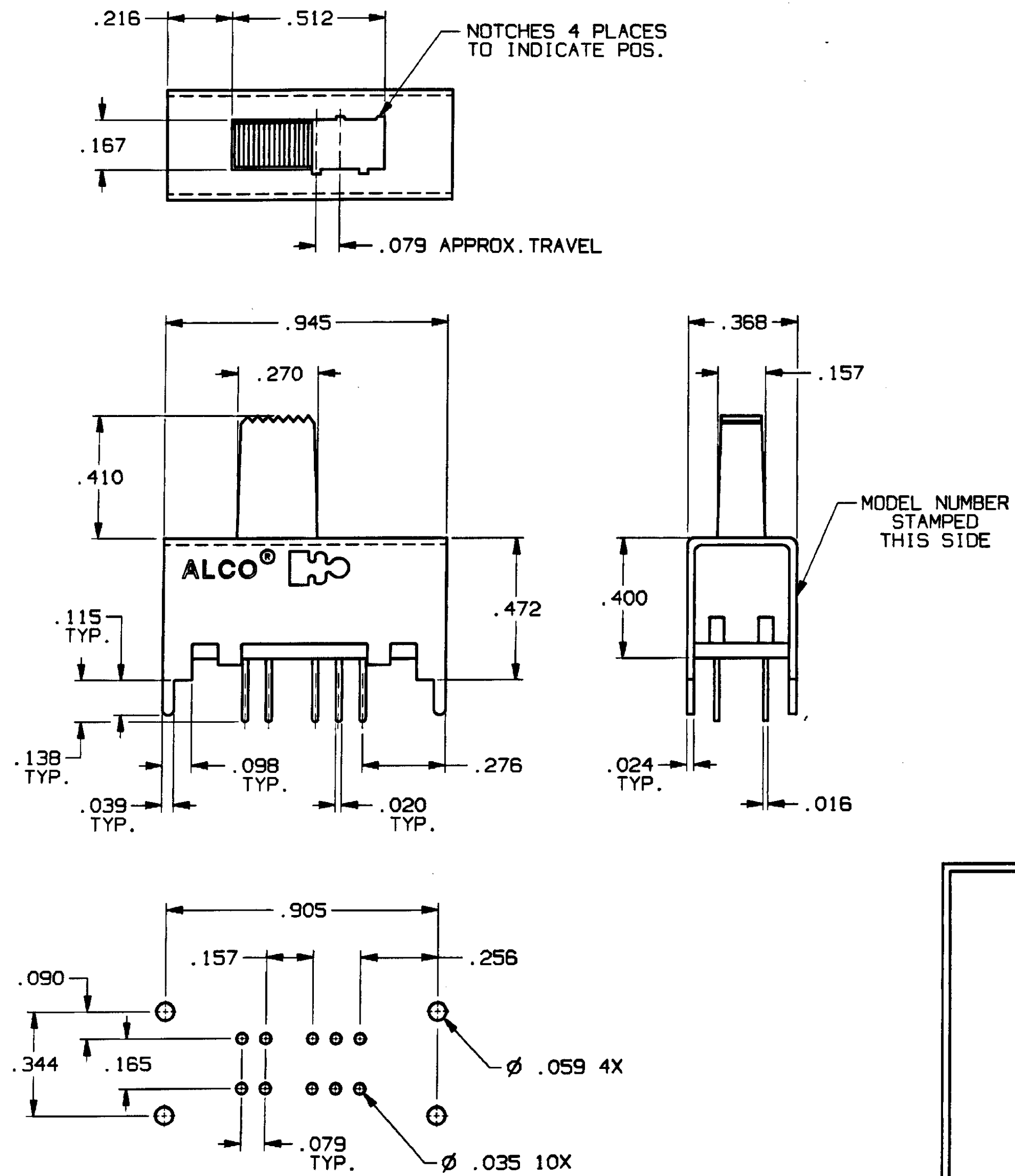


| CONVERSION CHART | |
|------------------|-------|
| INCH | MM |
| .002 | 0.05 |
| .010 | 0.25 |
| .016 | 0.40 |
| .020 | 0.50 |
| .024 | 0.60 |
| .035 | 0.88 |
| .039 | 0.99 |
| .059 | 1.49 |
| .079 | 2.00 |
| .090 | 2.28 |
| .098 | 2.48 |
| .115 | 2.92 |
| .138 | 3.50 |
| .157 | 3.98 |
| .165 | 4.19 |
| .167 | 4.24 |
| .216 | 5.48 |
| .270 | 6.85 |
| .276 | 7.01 |
| .344 | 8.73 |
| .368 | 9.34 |
| .400 | 10.16 |
| .410 | 10.41 |
| .472 | 11.98 |
| .512 | 13.00 |
| .905 | 22.98 |
| .945 | 24.03 |



SPECIFICATIONS:

MATERIALS:
CASE: COLD ROLLED STEEL.
ACTUATOR: POLYESTER, UL94V-0.
TERMINALS: GOLD OR SILVER PLATE.
TERMINAL SEAL: EPOXY.
CONTACTS, MOVING: COPPER ALLOY, GOLD OR SILVER PLATE.
CONTACTS, FIXED: COPPER ALLOY, GOLD OR SILVER PLATE.

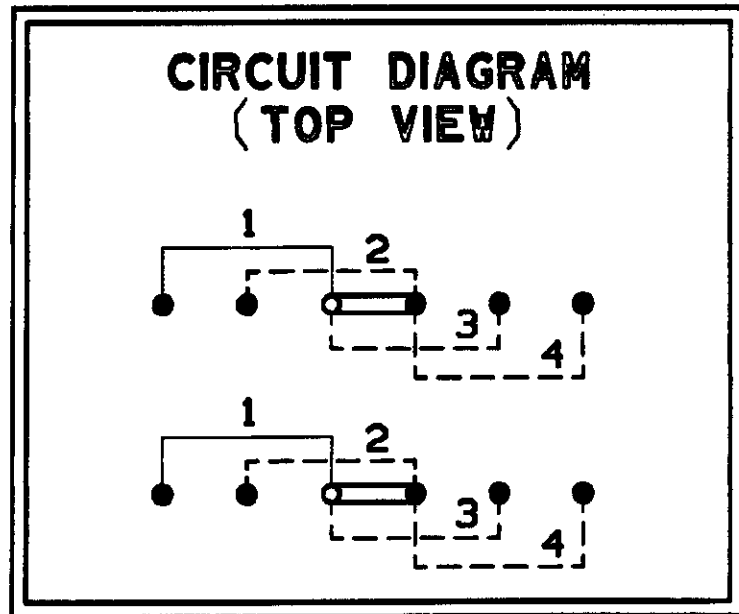
ELECTRICAL:
CONTACT RATING, SILVER: 300 MA @ 125 VAC.
CONTACT RATING, GOLD: 0.4 VA MAX. @ 20 VDC OR PEAK AC.
INITIAL CONTACT RESISTANCE: 30 MILLIOHMS MAX.
INSULATION RESISTANCE: 1,000 MEGOHMS MIN.
DIELECTRIC STRENGTH: 500 VOLTS RMS @ SEA LEVEL.
LIFE EXPECTANCY: 15,000 CYCLES.

MECHANICAL:
ACTUATION FORCE: 600 ±300 GRAMS.
ACTUATOR TRAVEL: .079 IN.

ENVIRONMENTAL:
SOLDER HEAT RESISTANCE:
OPERATING TEMPERATURE: -4°F TO +185°F, (-20°C TO +85°C).
STORAGE TEMPERATURE: -40°F TO +212°F, (-40°C TO +100°C).

NOTES:

1. INTERPRET DRAWING PER ANSI Y14.5M 1982.



| MODEL NO. | PLATING |
|------------|---------|
| MSSA-2450 | SILVER |
| MSSA-2450G | GOLD |

PC BOARD LAYOUT, TOP VIEW
RECOMMENDED TOLERANCES ±.002

AUGAT D/N 40116-SD

THIS IS A C.A.D. GENERATED DRAWING. DO NOT MAKE MANUAL REVISIONS TO MASTER.

| CUSTOMER DRAWING | | | |
|---|--|---------------------------------|-----------------------|
| SPECIFICATIONS ARE SUBJECT TO CHANGES WITHOUT NOTICE | | | |
| THIRD ANGLE PROJECTION | UNLESS OTHERWISE SPECIFIED DIMENSIONS ARE IN MILLIMETERS. DO NOT SCALE PRINT | ORIGINAL DATE OF DRAWING: | 9-23-96 |
| | TOLERANCES (EXCEPT AS NOTED) ANGULAR = ±1° DECIMAL .XXX = ±.010 | MATERIAL: SEE SPECIFICATIONS | DRAWN: C. THEODORE |
| AUGAT CONFIDENTIAL This document contains information which is the exclusive property of Augat Inc. Distribution, reproduction or use by others is not permitted without the expressed written consent of Augat Inc. | FINISH: SEE SPECIFICATIONS | CHECKED: | DATE: |
| | | APPROVED: | DATE: |
| | | CODE IDENT. NO. 91506 | DWG. SIZE C |
| | | NEXT ASSY: | |

| | |
|--|---------------------|
| TYCO ELECTRONICS | |
| TITLE: CUSTOMER DRAWING SLIDE SWITCH, DP 4 POS. (MSSA-2450 SERIES) | |
| DWG. NO. 5-1437580-7 | REV. A |
| PRODUCT CODE: | SCALE: SHEET 1 OF 1 |

| | |
|-----------|--------------|
| REV | A |
| REVISIONS | 0G3C-0173-02 |